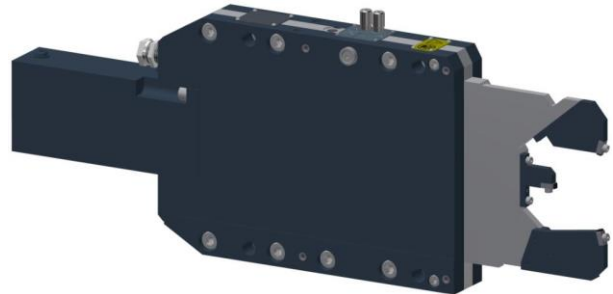


Nest Set			1	2	3	4
Minimum Clamp Diameter	D1	mm	43	56	69	82
Maximum Clamp Diameter	D2	mm	56	69	82	95

X-Axis Adjustment per Screw Rotation	mm	0.004
X-Axis Adjustment Total	mm	±0.20
Y-Axis Adjustment per Screw Rotation	mm	0.004
Y-Axis Adjustment Total	mm	±0.20
Piston Area	cm <sup>2</sup>	11.4
Cylinder Stroke	mm	127
Operating Pressure	bar	10 – 27
Maximum Pressure	bar	32
Air Purge Pressure	bar	0.3 – 0.5
Lubrication Volume	cm <sup>3</sup>	0.15 – 0.20
Lubrication Frequency		Working Cycle (or every 6 minutes)
Repeatability	mm	±0.001
Mass	kg	24
Max Lifting Capacity	Kg	70



#### Included Features

- \* Arm Retraction for Part Loading
- \* Extended Reach For Clearance
- \* Fixed or Follow Down Operation
- \* Upper Arm Gage Clearance
- \* 2-Axis Centerline Adjustment
- \* 90°= 0.001mm Adjustment
- \* Position Feedback Sensor
- \* Visible Zero Adjustment Screw

#### Items Required To Use This Product:

- \* Set of Nests
- \* Set of Wear Pads
- \* Mounting Base

Contact Us For Full Technical Details And Customer Service

sales@arobotech.com

www.arobotech.com